



**US Army Corps  
of Engineers** ®  
Rock Island District

# PUBLIC NOTICE

Applicants: Tama County  
Conservation Board

Date: July 22, 2021

Expires: August 20, 2021

CEMVR-RD-2021-0907

Section 404

---

**Joint Public Notice  
US Army Corps of Engineers  
Iowa Department of Natural Resources**

- 1. Applicant:** Tama County Conservation Board, c/o: Mr. Stephen Mayne, 2283 Park Road, Toledo, Iowa 502342.
- 2. Project Location:** The project is located at Otter Creek Lake & Park, east of CR R22/North 10<sup>th</sup> Street, west of North Warrior Lane, north of I-35/I-80, west of N Avenue, east of M Avenue, north of 28<sup>th</sup> Street, and south of 260<sup>th</sup> Street, in Sections 30 and 31, Township 84 North, Range 14 West, Tama County, Iowa. UTM NAD-83 Zone 15, Latitude 42.046205, Longitude -92.520305.
- 3. Project Description:** The Applicant proposes to stabilize the banks of Otter Creek Lake utilizing a combination of erosion control techniques. This project also involves dredging in the lake that will not require a permit. The spoils will be placed in uplands. This project is Phase 3 of a series of phased projects to improve the water quality of the lake. Impacts to Waters of the U.S., will occur through the placement of riprap, earthen fill/geogrids, the creation of new jetties, and the enhancement of existing jetties. Specifically, this project will involve the permanent loss of 0.477 acres of wetland and 0.97 acres of open water, and permanent impacts to approximately 4477 linear feet of lake shoreline. Otter Creek Lake will be impacted along 4477 linear feet of its shoreline for placement of riprap and earthen fill /geogrids. There will be a loss of 0.461 acres of wetland for placement of riprap and a loss of 0.016 acres of wetland for placement of earthen fill/geogrids. There will be a loss of 0.551 acres of Otter Creek Lake for constriction of new jetties and a loss of 0.376 acres of Otter Creek Lake for the enhancement of existing jetties. As this project exceeds 0.1 acres of wetland loss, and the mitigation thresholds for previous phases have been met, mitigation will be required for all phases of this project. The applicant proposes to mitigate for the losses of aquatic resources through permittee responsible mitigation, on-site in the northwest corner of Otter Creek Lake. Alternatives, both on-site and off-site will be evaluated to ensure compliance with the 404 B 1 guidelines.
- 4. Purpose and Need:** The applicant states that Otter Creek Lake's water quality is impaired, and one source of this impairment is the shoreline erosion that releases sediment into the lake and downstream waterbodies. The applicant states that purpose of this project is to repair and stabilize the eroded shoreline of the lake to protect the shoreline from erosion and improve the water quality.

## 5. Agency Review:

a. Department of the Army, Corps of Engineers. The Department of the Army application is being processed under the provisions of Section 404 of the Clean Water Act (33 U.S.C. 1344).

b. State of Iowa. The project plans have been submitted to the Iowa Department of Natural Resources for state certification of the proposed work in accordance with Section 401 of the Clean Water Act. The certification, if issued, will express the Department's opinion that the proposed activity will comply with Iowa's water quality standards (Chapter 61 IAC). The applicant has also applied for authorization of work in the floodplain pursuant to Chapter 455B of the Iowa Code and other applicable state permits. Written comments concerning possible impacts to waters of Iowa should be addressed to: Iowa Department of Natural Resources, 502 E. 9<sup>th</sup> Street, Des Moines, Iowa 50319. A copy of the comments should be provided to the Corps of Engineers office (see paragraph 11., of this public notice for address).

6. **Historical/Archaeological:** The Corps consulted with the Iowa I-Sites online geographic information systems (GIS) archeological site and survey databases (including the HILD data layer) and there were no sites in proximity of the project area shown on the I-Sites GIS website. A Phase 1 Archeologic Survey was complete, and no eligible sites were discovered. A "**no historic properties affected**" determination was made and the Phase 1 survey will be coordinated with the Iowa SHPO.

7. **Endangered Species:** District staff has performed a preliminary review of this application for the potential impact on threatened or endangered species pursuant to Section 7 of the Endangered Species Act as amended. The following threatened or endangered species are listed by the United States Fish and Wildlife Service as occurring in Polk County, Iowa: (<https://ecos.fws.gov/ipac/>)

- Indiana bat (*Myotis sodalis*) & Northern long-eared bat (*Myotis septentrionalis*) – The project area does not contain any known roost trees or hibernacula. The project area does contain large forested areas and potentially suitable habitat so this project **may affect but is not likely to adversely affect** any endangered and threatened bats. Coordination with the United States Fish and Wildlife service may be conducted.
- Prairie Bush-clover (*Lespedeza leptostachya*) – The project site does not contain dry to mesic prairies with gravelly soils; therefore, the Corps has determined there will be **no effect** to this species.
- Western Prairie Fringed Orchid (*Platanthera praeclara*) – The project site does not contain mesic to wet unplowed tallgrass prairies and meadows, therefore the Corps has determined there will be **no effect** to this species.
- Eastern Prairie Fringed Orchid (*Platanthera leucophaea*) – The project site does not contain mesic to wet prairies and meadows; therefore, the Corps has determined that there will be **no effect** to this species.

8. **Dredge/Fill Material Guidelines:** The evaluation of the impact of the proposed activity on the public interest will also include application of the guidelines promulgated by the Administrator of the United States Environmental Protection Agency under authority of Section 404(b) of the Clean Water Act (40 CFR Part 230).

**9. Public Interest Review:** The decision whether to issue the Corps permit will be based on an evaluation of the probable impact including cumulative impacts of the proposed activity on the public interest. That decision will reflect the national concern for both protection and utilization of important resources. The benefit which reasonably may be expected to accrue from the proposal must be balanced against its reasonably foreseeable detriments. All factors which may be relevant to the proposal will be considered including the cumulative effects thereof; among those are conservation, economics, aesthetics, general environmental concerns, wetlands, cultural values, fish and wildlife values, flood hazards, floodplain values, land use, navigation, shoreline erosion and accretion, recreation, water supply and conservation, water quality, energy needs, safety, food production and, in general, the needs and welfare of the people.

**10. Who Should Reply:** The Corps of Engineers is soliciting comments from the public; Federal, state, and local agencies and officials; Indian Tribes; and other interested parties in order to consider and evaluate the impacts of this proposed activity. Any comments received will be considered by the Corps of Engineers to determine whether to issue, modify, condition, or deny a permit for this proposal. To make this decision, comments are used to assess impacts on endangered species, historic properties, water quality, general environmental effects, and the other public interest factors listed above. Comments are used in the preparation of an Environmental Assessment and/or an Environmental Impact Statement pursuant to the National Environmental Policy Act. Comments are also used to determine the need for a public hearing and to determine the overall public interest of the proposed activity. These statements should be submitted on or before the expiration date specified at the top of page 1. These statements should bear upon the adequacy of plans and suitability of locations and should, if appropriate, suggest any changes considered desirable.

**11. Public Hearing Requests:** Any person may request, in writing, within the comment period specified in this notice, that a public hearing be held to consider this application. Requests for public hearings shall state, with particularity, the reasons for holding a public hearing. A request may be denied if substantive reasons for holding a hearing are not provided.

**12. Reply to the Corps.** Comments concerning the Corps permit should be addressed to the District Engineer, US Army Corps of Engineers, Rock Island District, ATTN: RD (MEINCKE), Clock Tower Building - Post Office Box 2004, Rock Island, Illinois 61204-2004. For additional information contact **Mr. Alex Meincke 309-794-5368**) or email: [alexander.c.meincke@usace.army.mil](mailto:alexander.c.meincke@usace.army.mil).

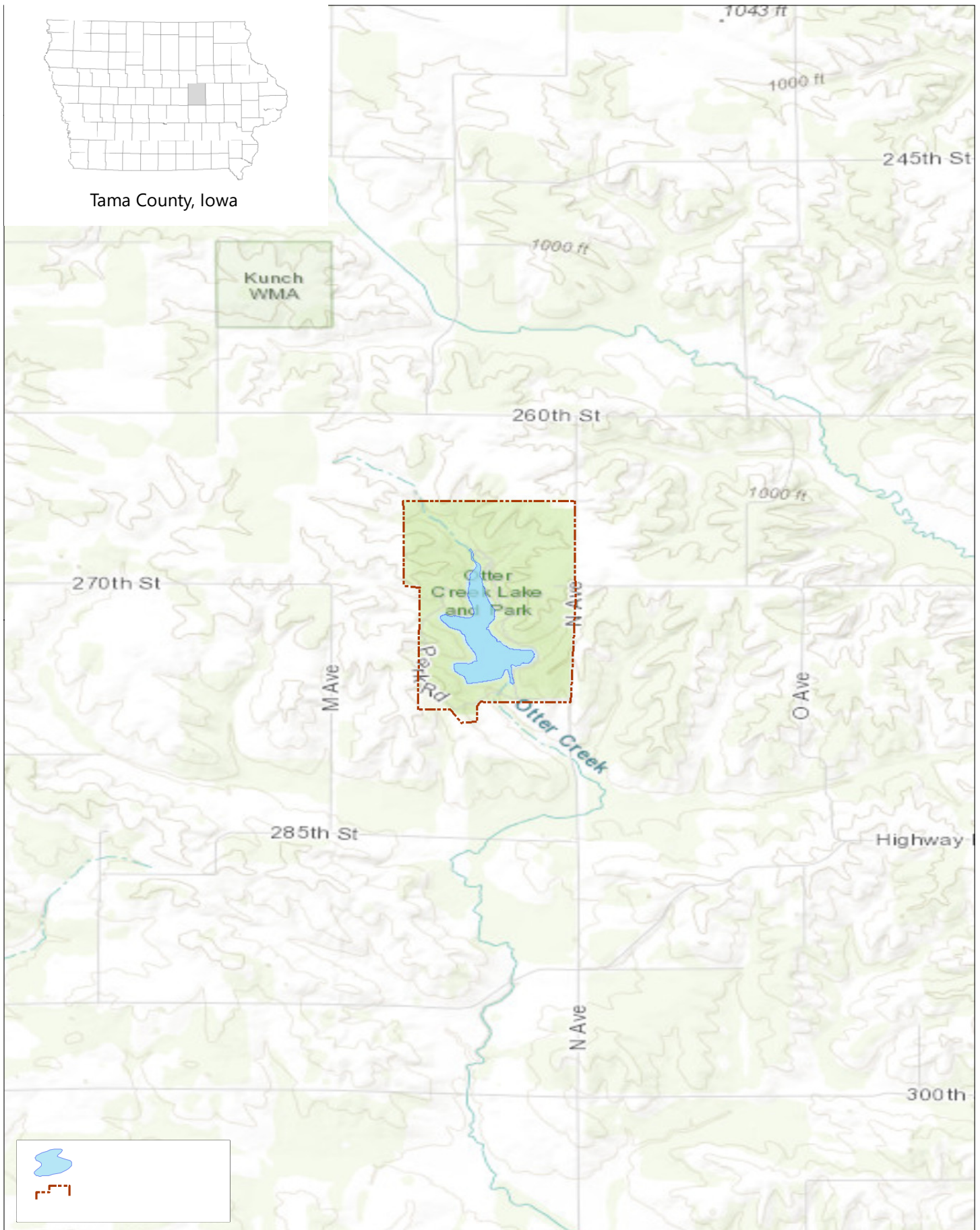
*Alex Meincke*

Attach  
Plan

Mr. Alex C. Meincke  
Project Manager, Western Branch  
Regulatory Division

**REQUEST TO POSTMASTERS:** Please post this notice conspicuously and continuously until the expiration date specified at the top of page 1.

**NOTICE TO EDITORS:** This notice is provided as background information for your use in formatting news stories. This notice is not a contract for classified display advertising.



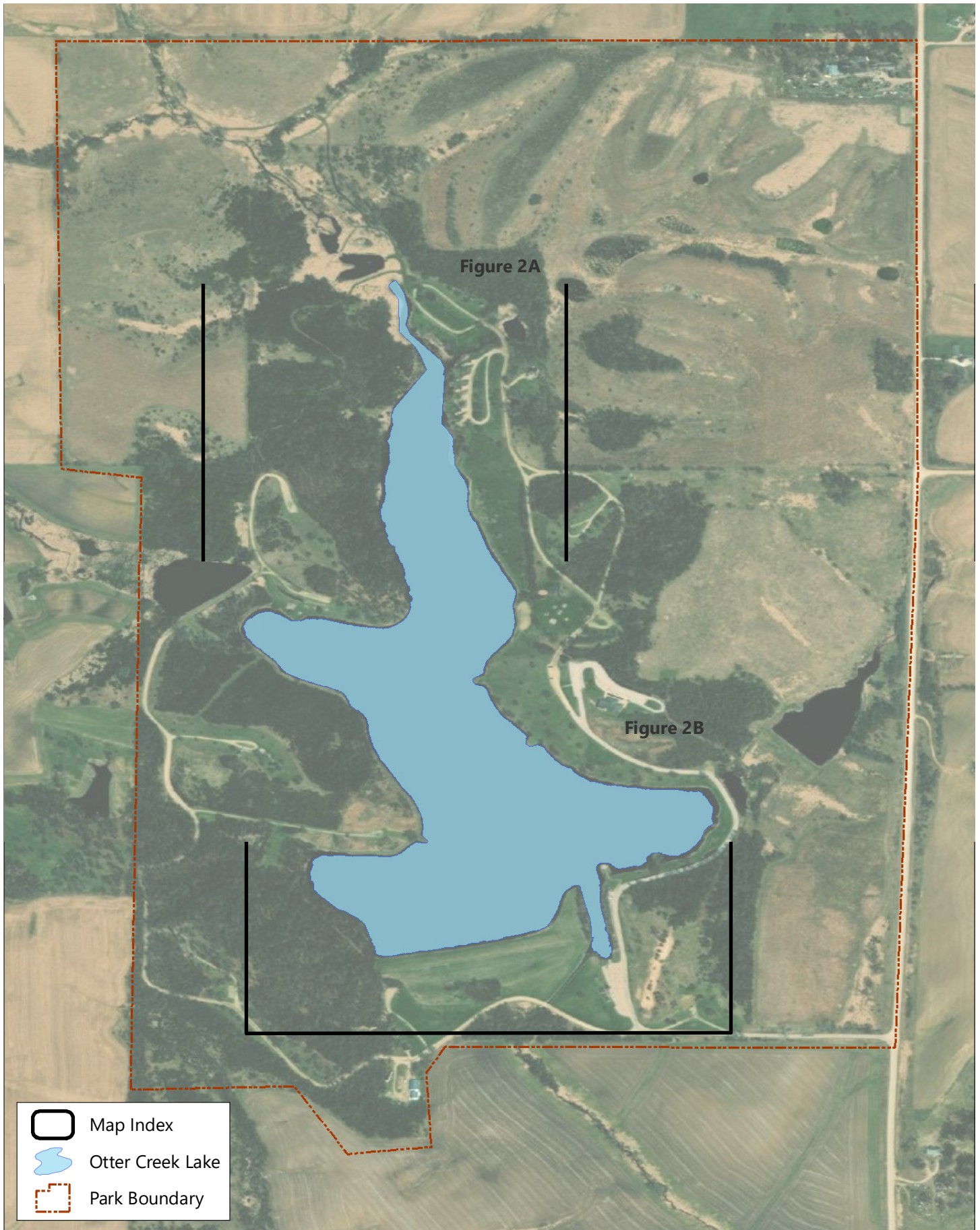
**Figure 1. Location Map**

Request for Individual Permit  
 Otter Creek Lake & Park - Shoreline Stabilization Project  
 Tama County Conservation Board



0 2,000 4,000  
 Feet





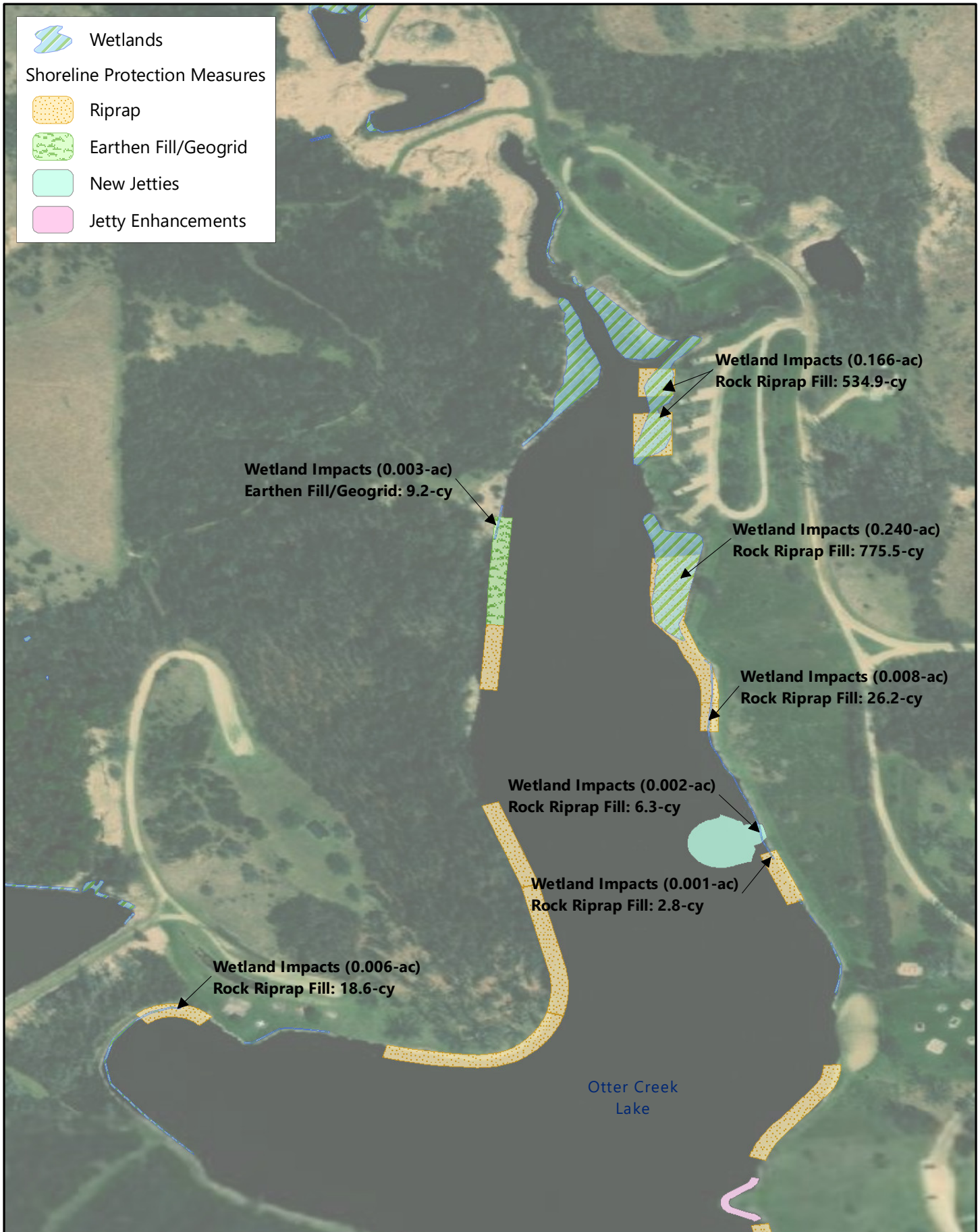
**Figure 2. Map Index**

Request for Individual Permit  
 Otter Creek Lake & Park - Shoreline Stabilization Project  
 Tama County Conservation Board



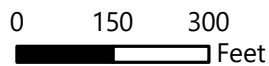
0 400 800  
 Feet

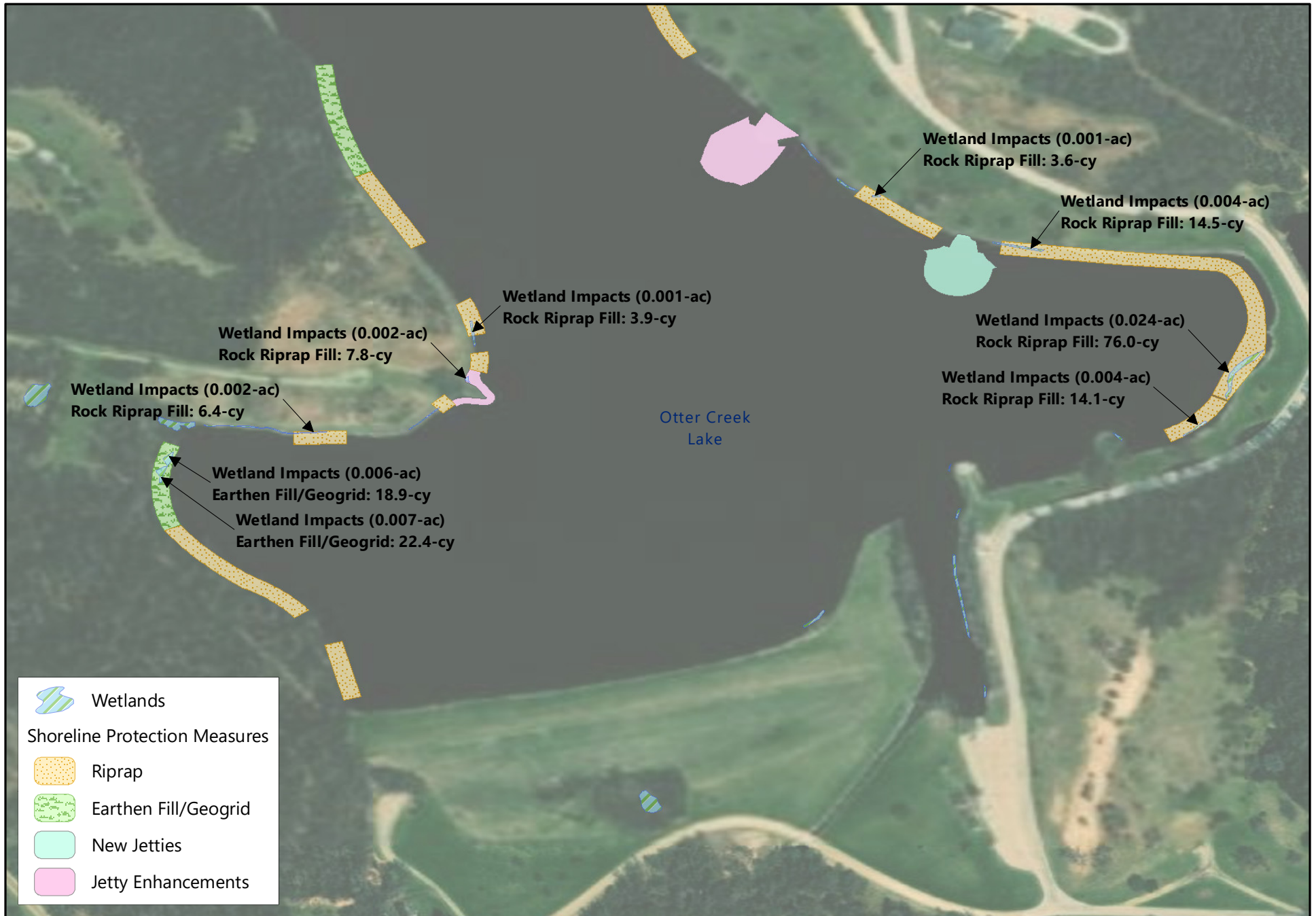




**Figure 2A. Plan View**

Request for Individual Permit  
 Otter Creek Lake & Park - Shoreline Stabilization Project  
 Tama County Conservation Board



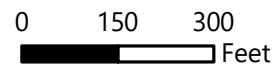


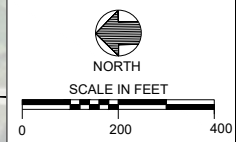
**Figure 2B. Plan View**

Request for Individual Permit

Otter Creek Lake & Park - Shoreline Stabilization Project

Tama County Conservation Board





ENGINEER'S SEAL

REVISIONS

NO.	DATE

DESIGNED BY: SEM  
DRAWN BY: CKW  
QA / QC BY: MKS  
PROJECT NO.: 145-20-01  
DATE: MAY 2021

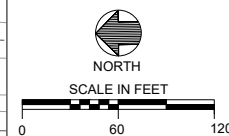
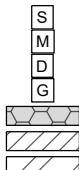
TITLE  
**LAKE SHEET  
KEY**



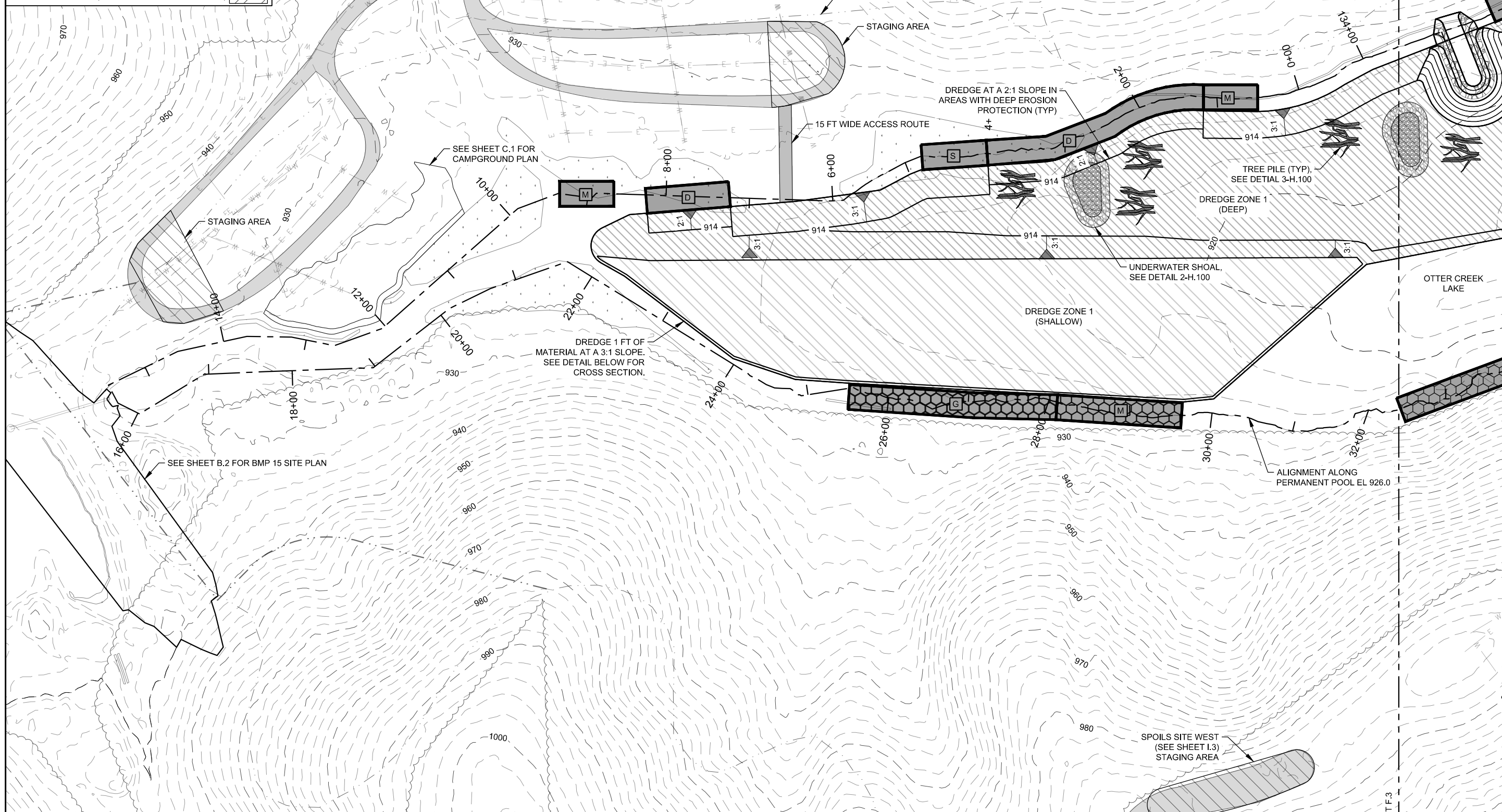


**LEGEND**

- SHALLOW EROSION PROTECTION
- MEDIUM EROSION PROTECTION
- DEEP EROSION PROTECTION
- OPEN-CELLED GEOGRID EROSION PROTECTION
- SHORELINE BID ALTERNATE
- DEEP DREDGE ZONE (DREDGE TO EL 914)
- SHALLOW DREDGE ZONE (DREDGE DEPTH VARIES PER PLANS)

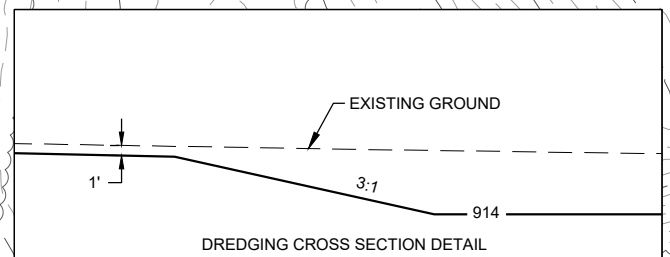


**FYRA**  
ENGINEERING  
100 Court Avenue, Suite 202  
Des Moines, Iowa 50309  
515.444.5393  
www.fyraengineering.com



NOTE: SHORELINE PLAN VIEW ONLY SHOWS LOCATION. GRADING AND EXTENTS SHOULD BE CONSTRUCTED ACCORDING TO SPECIFIED DETAIL ON SHEET F.100.

START STA	END STA	SHORELINE TYPE	LENGTH
0+51	1+16	MEDIUM EROSION PROTECTION	65
1+16	3+99	DEEP EROSION PROTECTION	283
3+99	4+78	SHALLOW EROSION PROTECTION	79
7+24	8+26	DEEP EROSION PROTECTION	102
8+63	9+34	MEDIUM EROSION PROTECTION	71
<b>BID ALTERNATE</b>			
25+50	28+10	OPEN-CELLED GEOGRID EROSION PROTECTION	260
28+10	29+63	MEDIUM EROSION PROTECTION	153



**OTTER CREEK LAKE RESTORATION PHASE 3**  
**TAMA COUNTY CONSERVATION BOARD**  
 TAMA COUNTY, IOWA  
 2021

ENGINEER'S SEAL

REVISIONS	
NO.	DATE

DESIGNED BY: SEM  
 DRAWN BY: CKW  
 QA / QC BY: MKS  
 PROJECT NO.: 145-20-01  
 DATE: MAY 2021

TITLE  
**LAKE PLAN**  
 (1 OF 4)

SHEET  
**F.2**

**LEGEND**

- SHALLOW EROSION PROTECTION
- MEDIUM EROSION PROTECTION
- DEEP EROSION PROTECTION
- OPEN-CELLED GEOGRID EROSION PROTECTION
- SHORELINE BID ALTERNATE
- DEEP DREDGE ZONE (DREDGE TO EL 914)
- SHALLOW DREDGE ZONE (DREDGE DEPTH VARIES PER PLANS)

S  
M  
D  
G

DREDGE AT A 2:1 SLOPE IN AREAS WITH DEEP EROSION PROTECTION (TYP)

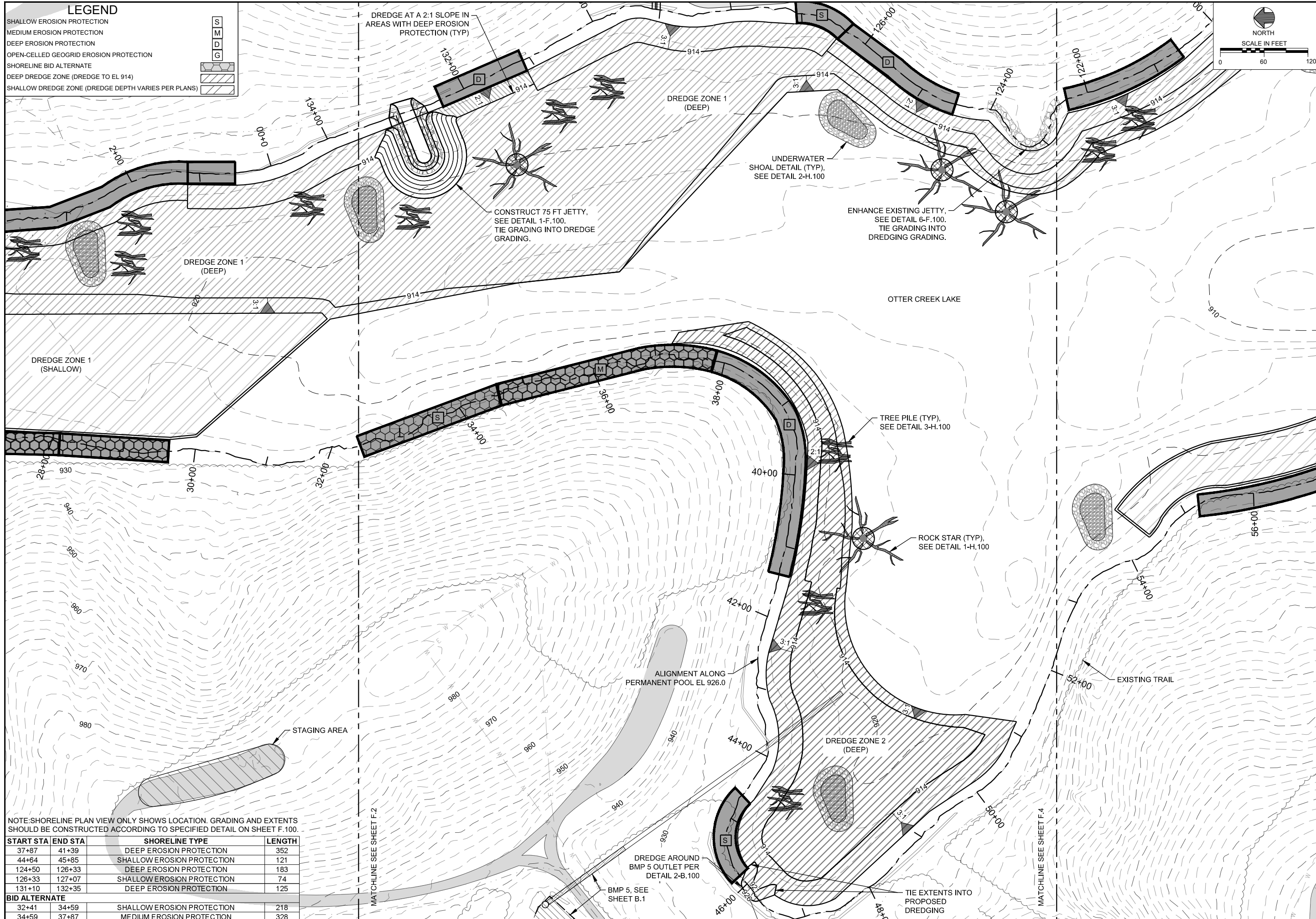
NORTH

SCALE IN FEET

0 60 120

**FYRA**  
ENGINEERING

100 Court Avenue, Suite 202  
Des Moines, Iowa 50309  
515.444.5393  
www.fyraengineering.com



NOTE: SHORELINE PLAN VIEW ONLY SHOWS LOCATION. GRADING AND EXTENTS SHOULD BE CONSTRUCTED ACCORDING TO SPECIFIED DETAIL ON SHEET F.100.

START STA	END STA	SHORELINE TYPE	LENGTH
37+87	41+39	DEEP EROSION PROTECTION	352
44+64	45+85	SHALLOW EROSION PROTECTION	121
124+50	126+33	DEEP EROSION PROTECTION	183
126+33	127+07	SHALLOW EROSION PROTECTION	74
131+10	132+35	DEEP EROSION PROTECTION	125
<b>BID ALTERNATE</b>			
32+41	34+59	SHALLOW EROSION PROTECTION	218
34+59	37+87	MEDIUM EROSION PROTECTION	328

OTTER CREEK LAKE RESTORATION PHASE 3  
TAMA COUNTY CONSERVATION BOARD  
TAMA COUNTY, IOWA  
2021

ENGINEER'S SEAL

REVISIONS

NO.	DATE

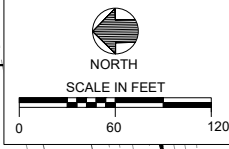
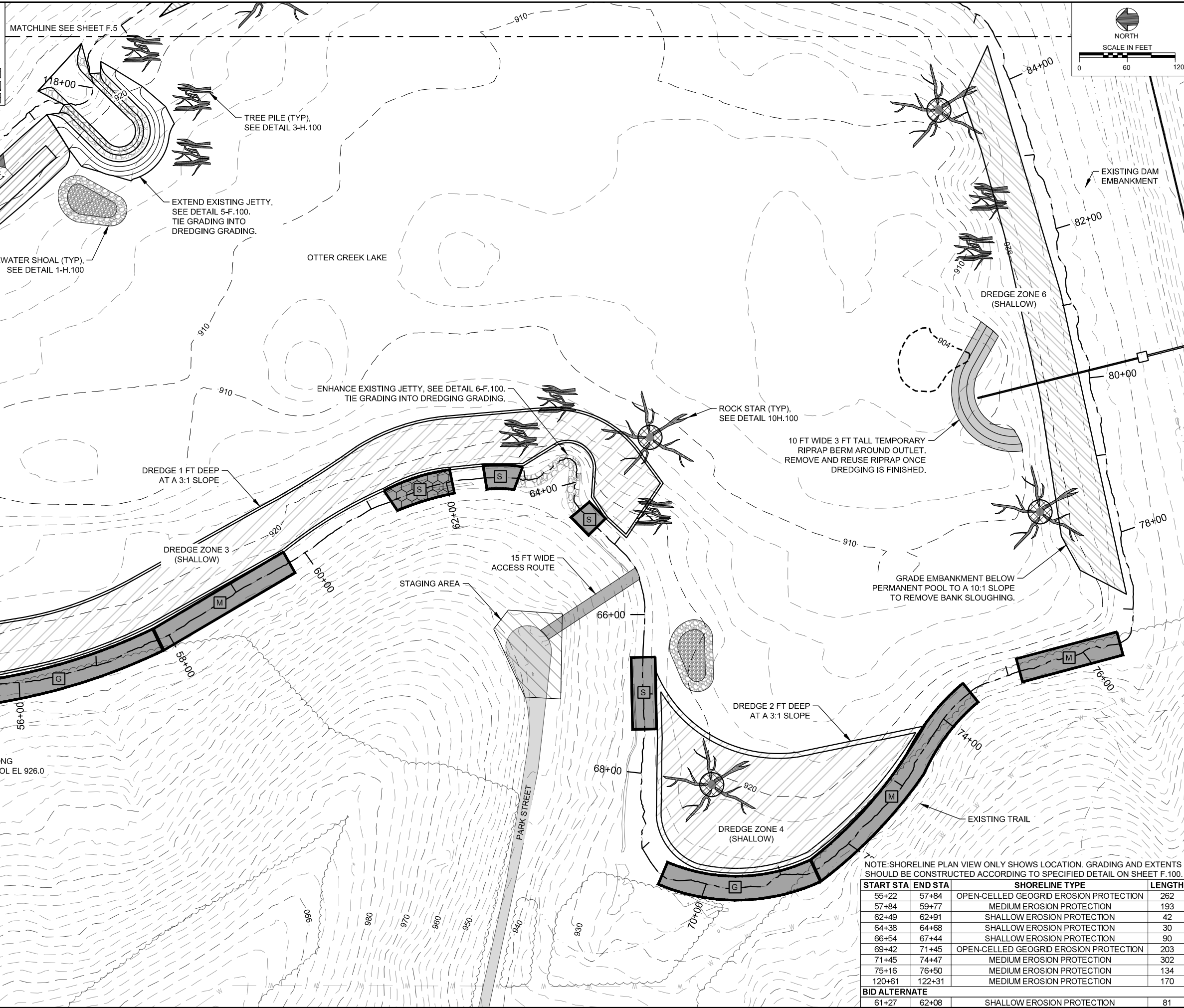
DESIGNED BY: SEM  
DRAWN BY: CKW  
QA / QC BY: MKS  
PROJECT NO.: 145-20-01  
DATE: MAY 2021

TITLE  
**LAKE PLAN**  
(2 OF 4)

SHEET  
**F.3**

**LEGEND**

SHALLOW EROSION PROTECTION	S
MEDIUM EROSION PROTECTION	M
DEEP EROSION PROTECTION	D
OPEN-CELLED GEOGRID EROSION PROTECTION	G
SHORELINE BID ALTERNATE	
DEEP DREDGE ZONE (DREDGE TO EL 914)	
SHALLOW DREDGE ZONE (DREDGE DEPTH VARIES PER PLANS)	



**FYRA**  
ENGINEERING

100 Court Avenue, Suite 202  
Des Moines, Iowa 50309  
515.444.5393  
www.fyraengineering.com

OTTER CREEK LAKE RESTORATION PHASE 3  
TAMA COUNTY CONSERVATION BOARD  
TAMA COUNTY, IOWA  
2021

ENGINEER'S SEAL

REVISIONS

NO.	DATE

DESIGNED BY: SEM  
DRAWN BY: CKW  
QA / QC BY: MKS  
PROJECT NO.: 145-20-01  
DATE: MAY 2021

TITLE  
**LAKE PLAN  
(3 OF 4)**

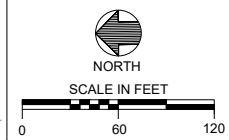
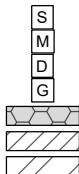
NOTE: SHORELINE PLAN VIEW ONLY SHOWS LOCATION. GRADING AND EXTENTS SHOULD BE CONSTRUCTED ACCORDING TO SPECIFIED DETAIL ON SHEET F.100.

START STA	END STA	SHORELINE TYPE	LENGTH
55+22	57+84	OPEN-CELLED GEOGRID EROSION PROTECTION	262
57+84	59+77	MEDIUM EROSION PROTECTION	193
62+49	62+91	SHALLOW EROSION PROTECTION	42
64+38	64+68	SHALLOW EROSION PROTECTION	30
66+54	67+44	SHALLOW EROSION PROTECTION	90
69+42	71+45	OPEN-CELLED GEOGRID EROSION PROTECTION	203
71+45	74+47	MEDIUM EROSION PROTECTION	302
75+16	76+50	MEDIUM EROSION PROTECTION	134
120+61	122+31	MEDIUM EROSION PROTECTION	170
<b>BID ALTERNATE</b>			
61+27	62+08	SHALLOW EROSION PROTECTION	81

SHEET  
**F.4**

**LEGEND**

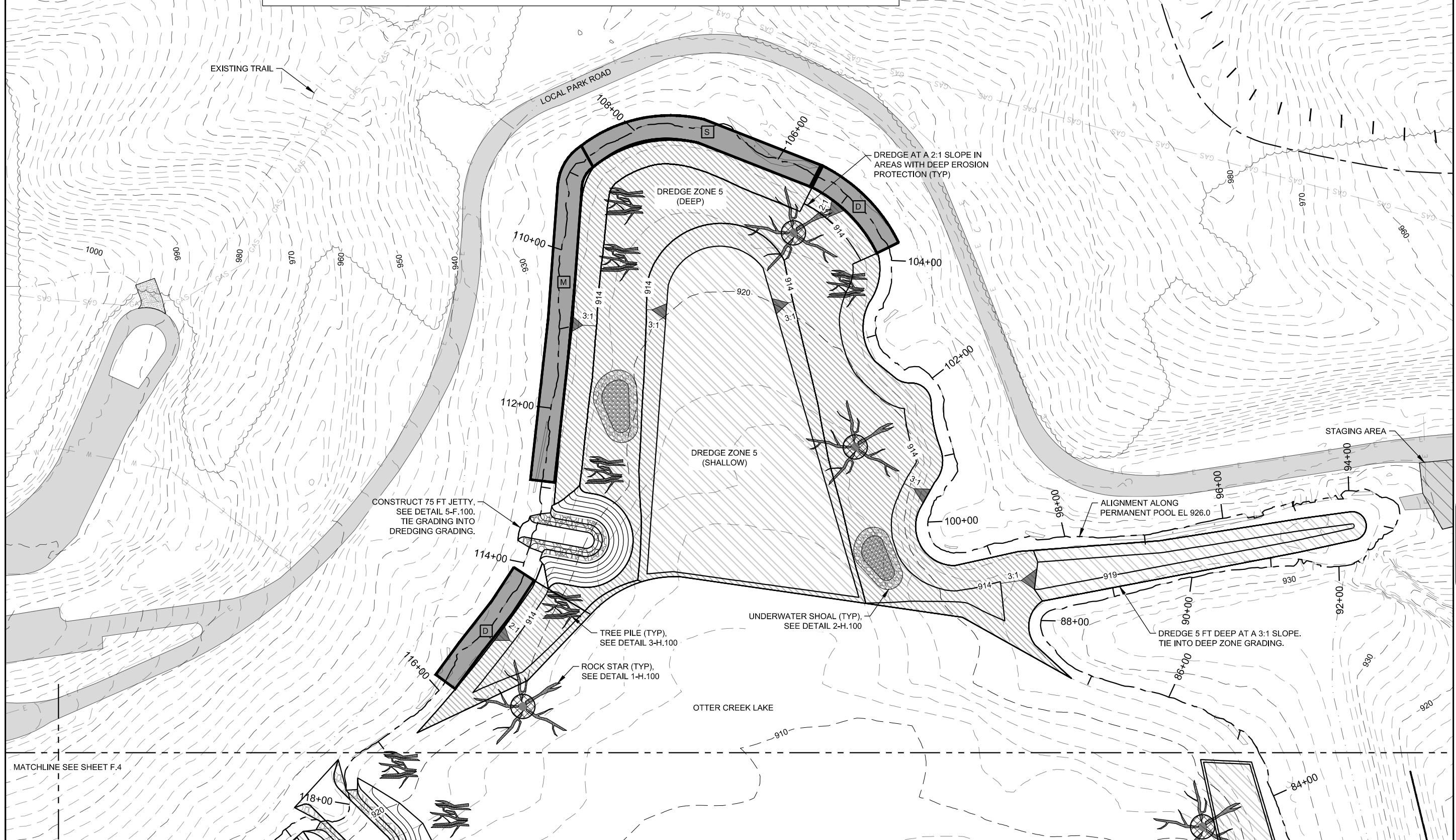
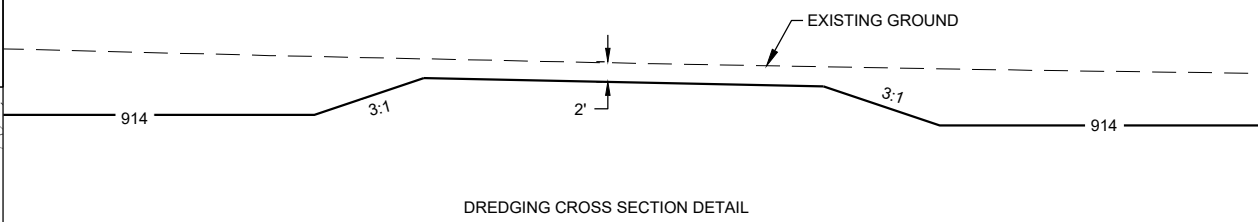
- SHALLOW EROSION PROTECTION
- MEDIUM EROSION PROTECTION
- DEEP EROSION PROTECTION
- OPEN-CELLED GEOGRID EROSION PROTECTION
- SHORELINE BID ALTERNATE
- DEEP DREDGE ZONE (DREDGE TO EL 914)
- SHALLOW DREDGE ZONE (DREDGE DEPTH VARIES PER PLANS)



**FYRA**  
ENGINEERING  
100 Court Avenue, Suite 202  
Des Moines, Iowa 50309  
515.444.5393  
www.fyraengineering.com

NOTE: SHORELINE PLAN VIEW ONLY SHOWS LOCATION. GRADING AND EXTENTS SHOULD BE CONSTRUCTED ACCORDING TO SPECIFIED DETAIL ON SHEET F.100.

START STA	END STA	SHORELINE TYPE	LENGTH
104+17	105+46	DEEP EROSION PROTECTION	129
105+46	108+69	SHALLOW EROSION PROTECTION	323
108+69	112+93	MEDIUM EROSION PROTECTION	424
114+14	115+87	DEEP EROSION PROTECTION	173



**OTTER CREEK LAKE RESTORATION PHASE 3**  
**TAMA COUNTY CONSERVATION BOARD**  
 TAMA COUNTY, IOWA  
 2021

ENGINEER'S SEAL

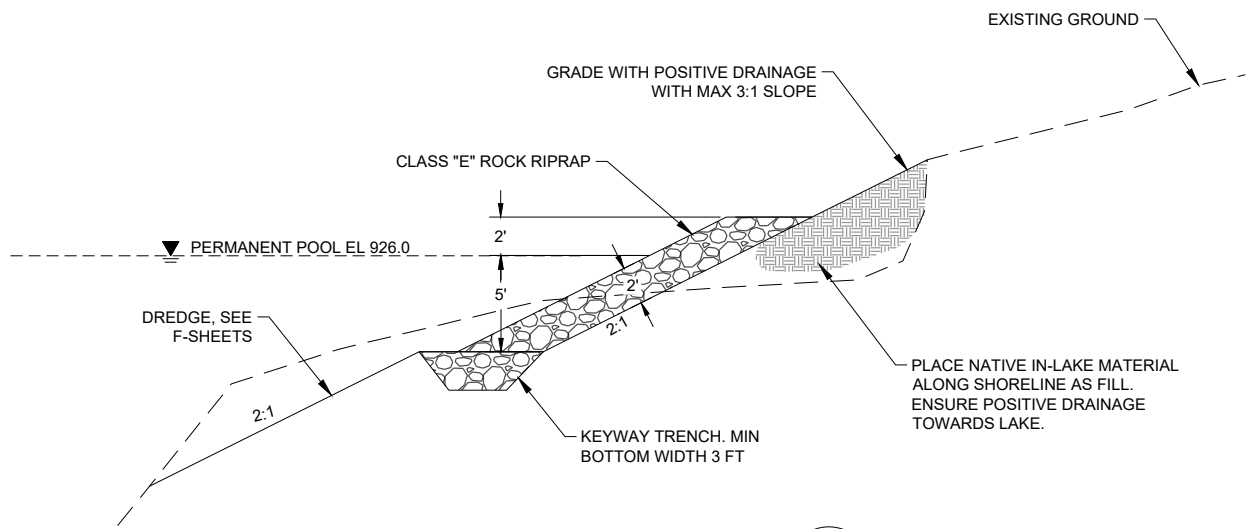
REVISIONS	
NO.	DATE

DESIGNED BY: SEM  
 DRAWN BY: CKW  
 QA / QC BY: MKS  
 PROJECT NO.: 145-20-01  
 DATE: MAY 2021

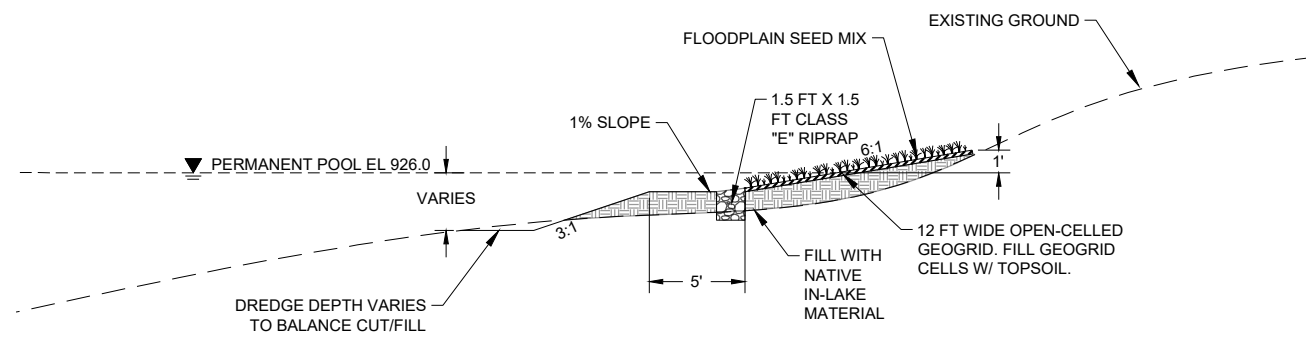
TITLE  
**LAKE PLAN**  
**(4 OF 4)**

SHEET  
**F.5**

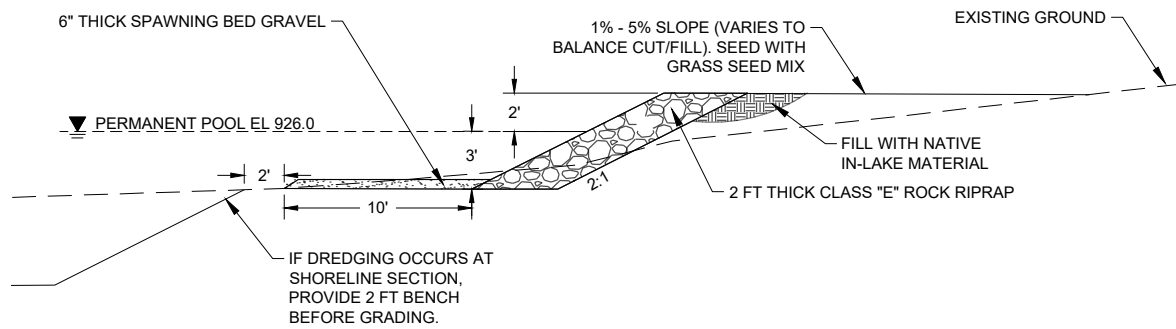
MATCHLINE SEE SHEET F.4



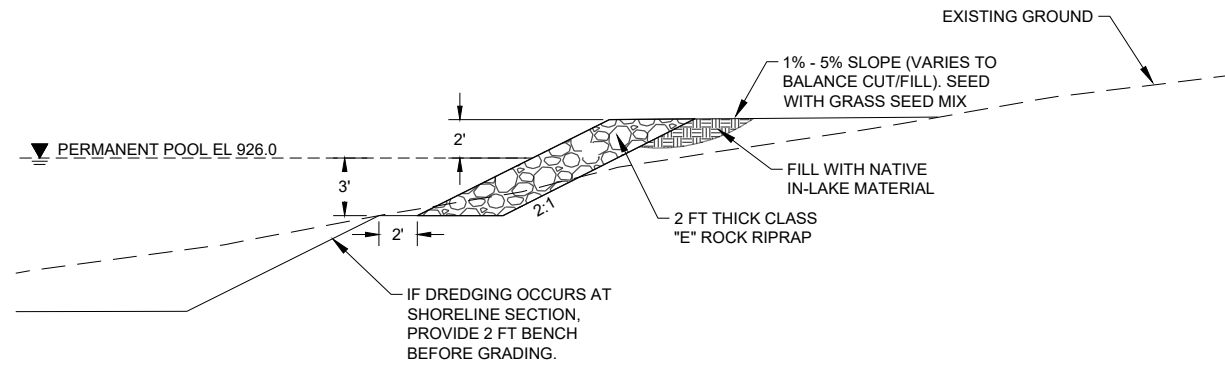
**DEEP EROSION PROTECTION** 1  
NOT TO SCALE F.100



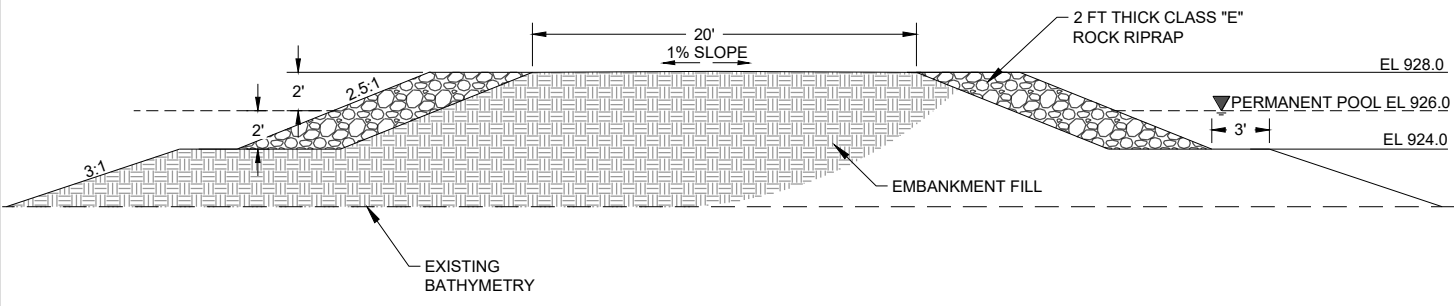
**OPEN-CELLED GEOGRID EROSION PROTECTION** 2  
NOT TO SCALE F.100



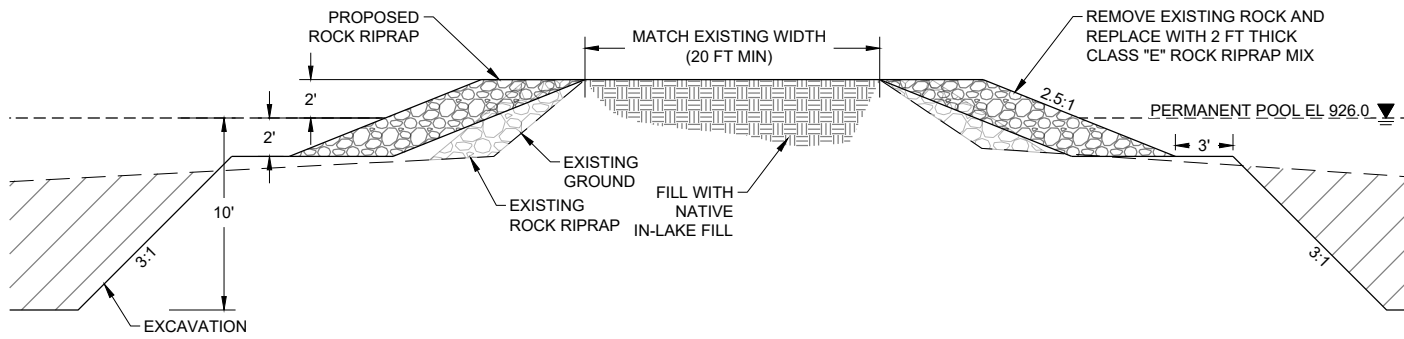
**SHALLOW EROSION PROTECTION WITH GRAVEL BED** 3  
NOT TO SCALE F.100



**MEDIUM EROSION PROTECTION** 4  
NOT TO SCALE F.100



**JETTY CROSS SECTION** 5  
NOT TO SCALE F.100



**JETTY ENHANCEMENT DETAIL** 6  
NOT TO SCALE F.100

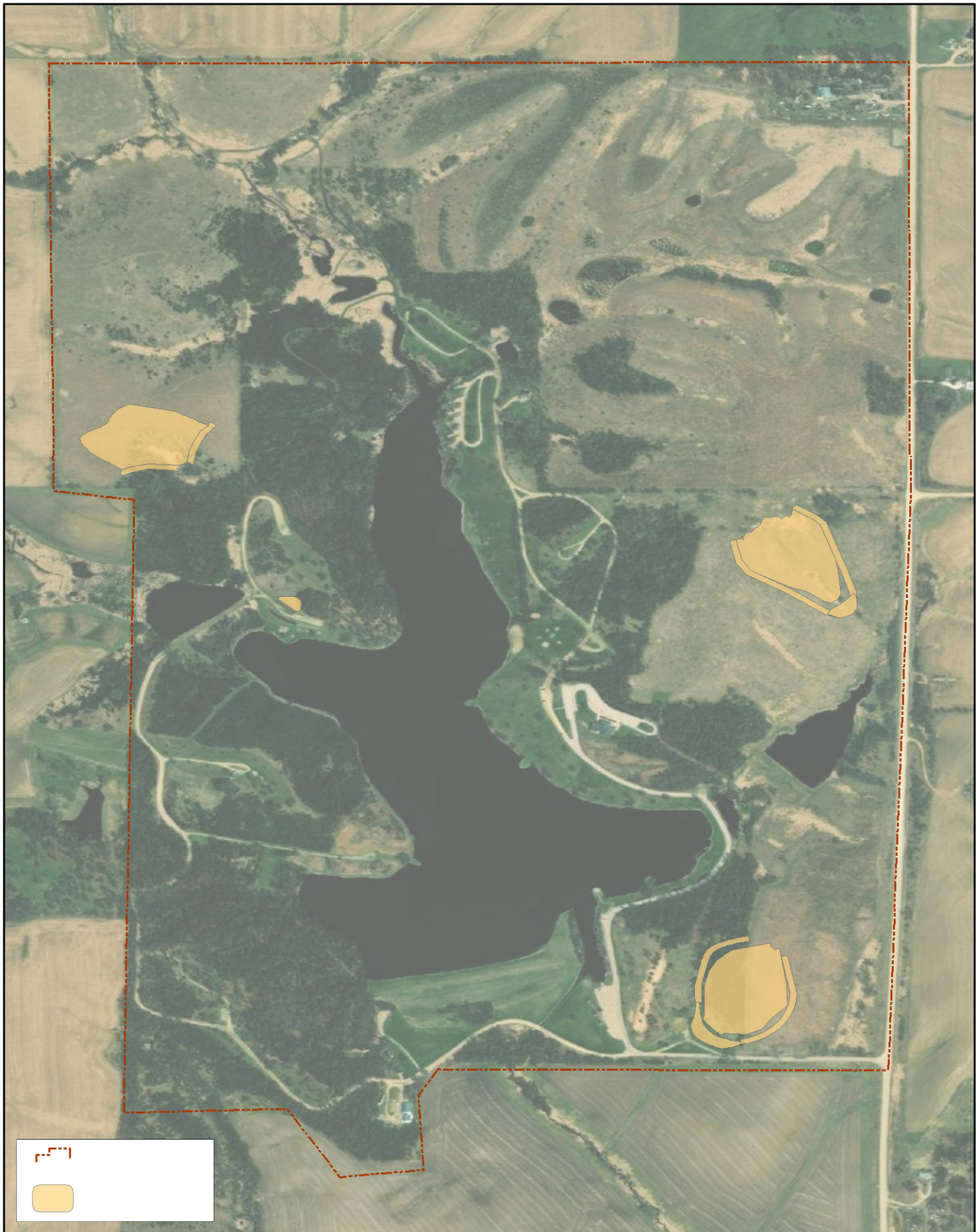
OTTER CREEK LAKE RESTORATION PHASE 3  
TAMA COUNTY CONSERVATION BOARD  
TAMA COUNTY, IOWA  
2021

ENGINEER'S SEAL

REVISIONS	
NO.	DATE

DESIGNED BY: SEM  
DRAWN BY: CKW  
QA / QC BY: MKS  
PROJECT NO.: 145-19-01  
DATE: MAY 2021

TITLE  
**SHORELINE DETAILS**



### Spoil Site Locations

Spoil Site Locations  
Otter Creek Lake & Park Project  
Tama County Conservation Board



0 800 Feet

